

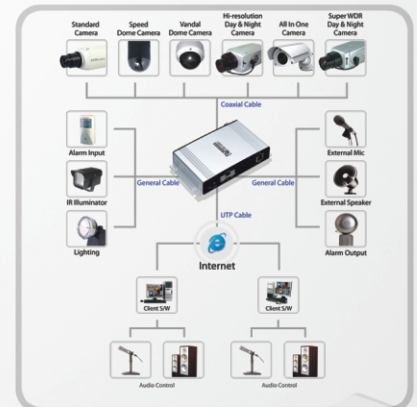
Professional Intelligent IP Network Video Server

High Resolution, Quality, Reliability



Professional Intelligent IP Network Video Server

- High resolution (Full D1)
- MPEG4 compression at 30/25 frames per second
- Quick & Easy set up with user friendly GUI
- Sophisticated motion detection
- Supports Pre & Post event record in client PC
- Notify events via e-mail
- BI-Directional audio function
- Support for PTZ units
- Camera title display
- Compact size



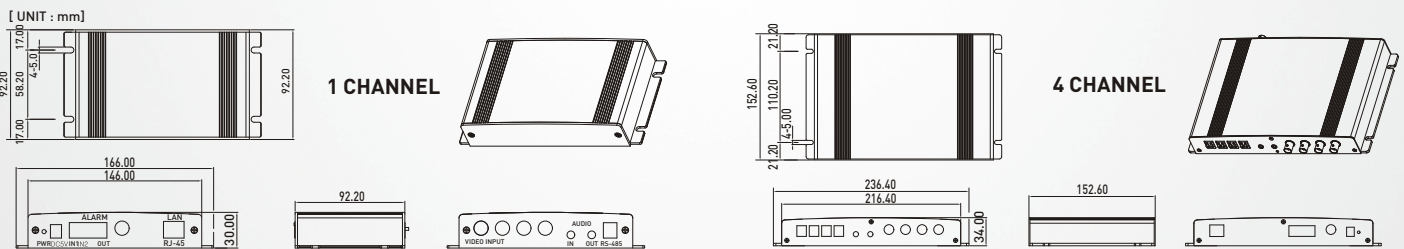
Professional Intelligent IP Network Video Server

SPECIFICATIONS

	1 CHANNEL (1CH, eVS)	4 CHANNEL (4CH, eVS)	4 WAY (4WAY, eVS)
Composite input	NTSC/PAL auto detection	NTSC/PAL auto detection	NTSC/PAL auto detection
Display resolutions	D1 (PAL: 720 x 576, NTSC: 720 x 480), 640x480, 320x240, 160x120	D1 (PAL: 720 x 576, NTSC: 720 x 480), 640x480, 320x240, 160x120	D1 (PAL: 720 x 576, NTSC: 720 x 480), 640x480, 320x240, 160x120
Maximum frame rate	25 fps@720 x 576, 30fps@720 x 480	25 fps@720 x 576, 30fps@720 x 480	25 fps@720 x 576, 30fps@720 x 480
Video compression format	MPEG-4 Part2(ISO/IEC 14496-2), Profile: SP and ASP	MPEG-4 Part2(ISO/IEC 14496-2), Profile: SP and ASP	MPEG-4 Part2(ISO/IEC 14496-2), Profile: SP and ASP
Analog video input/output	Composite: BNC x 1, 1.0Vp-p,75Ω	Composite: BNC x 4 input, 1.0Vp-p,75Ω, BNC x 1 output	Composite: BNC x 4 input, 1.0Vp-p,75Ω, BNC x 1 output
Audio compression format, I/Oterminal	G.726 (ADPCM), Full duplex, 16/8 kbps, 3.5mm Mic in x1 and speaker out x1	G.726 (ADPCM), Full duplex, 16/8 kbps, 3.5mm Mic in x1 and speaker out x1	G.726 (ADPCM), Full duplex, 16/8 kbps, 3.5mm Mic in x1 and speaker out x1
External alarm I/O terminal	Alarm in x2, Alarm out x1	Alarm in x2, Alarm out x1	Alarm in x2, Alarm out x1
Event(Alarm/Motion) Management	Built-in motion detection, Adjustable sensitivity and dwelling time, Emailing	Built-in motion detection, Adjustable sensitivity and dwelling time, Emailing	Built-in motion detection, Adjustable sensitivity and dwelling time, Emailing
Protocols	TCP/IP, UDP, HTTP, RTP, RTSP, DHCP, SMTP, DDNS	TCP/IP, UDP, HTTP, RTP, RTSP, DHCP, SMTP, DDNS	TCP/IP, UDP, HTTP, RTP, RTSP, DHCP, SMTP, DDNS
RS-485 interface	1EA, PTZ control, Terminal type	1EA, PTZ control, Terminal type	4EA, PTZ control, Terminal type
Ethernet	10Base-T/100Base-T (RJ-45)	10Base-T/100Base-T (RJ-45)	10Base-T/100Base-T (RJ-45)
Power	DC5V or PoE, 4.4W (IEEE802.3af compatible, Optional)	DC5V, 7.5W	DC5V, 20.0W
Dimensions & Weight	165x30x97, 310g	165x30x97, 360g	220x32x150, 450g
Pre/Post event recording time	Max. 180sec	Max. 180sec	Max. 180sec
Image setting	Color, Brightness, Contrast	Color, Brightness, Contrast	Color, Brightness, Contrast
Access level / Bandwidth control	Yes	Yes	Yes
Recording(Event, Schedule, Manual) Time/Event(Alarm, Motion) searching			
Remote set-up/Email notification			
Multicasting capability/ viewer/upgrade			
Minimum Operation system	Microsoft Windows 2000/XP, Intel Pentium III 500MHz or higher, 256MB or more	Microsoft Windows 2000/XP, Intel Pentium III 500MHz or higher, 256MB or more	Microsoft Windows 2000/XP, Intel Pentium III 500MHz or higher, 256MB or more
Web browser	Microsoft Internet Explorer version 6.0	Microsoft Internet Explorer version 6.0	Microsoft Internet Explorer version 6.0

* Specifications and design are subject to change without notice *

DIMENSIONAL DRAWING



GENERAL APPLICATION

